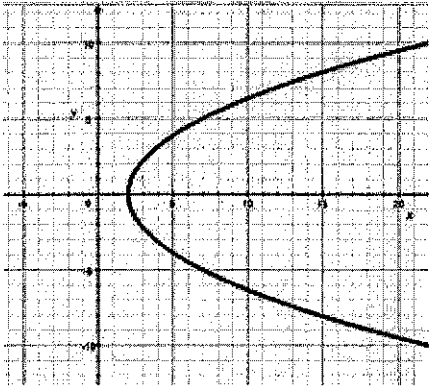


Math I

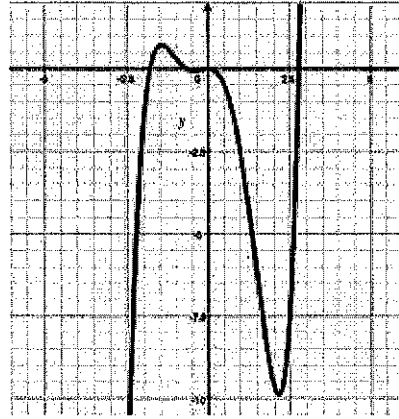
Lesson 1 Assignment Functions

Determine whether or not the following are functions and explain why or why not.

1.



2.



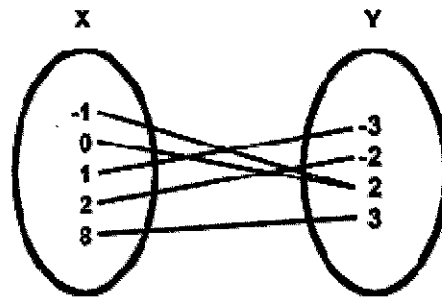
3. (12, 6) (3, 7) (2, 1) (-2, 6)

4. (9, 2) (1, 3) (5, 7) (9, 6) (7, 2)

5.

x	y
7	2
5	5
-3	1
-1	2

6.



Answer Key:

1. No

2. Yes

3. Yes

4. No

5. Yes

6. Yes